

MODULE 8 L04

Digestive Tract: Pharynx to Esophagus

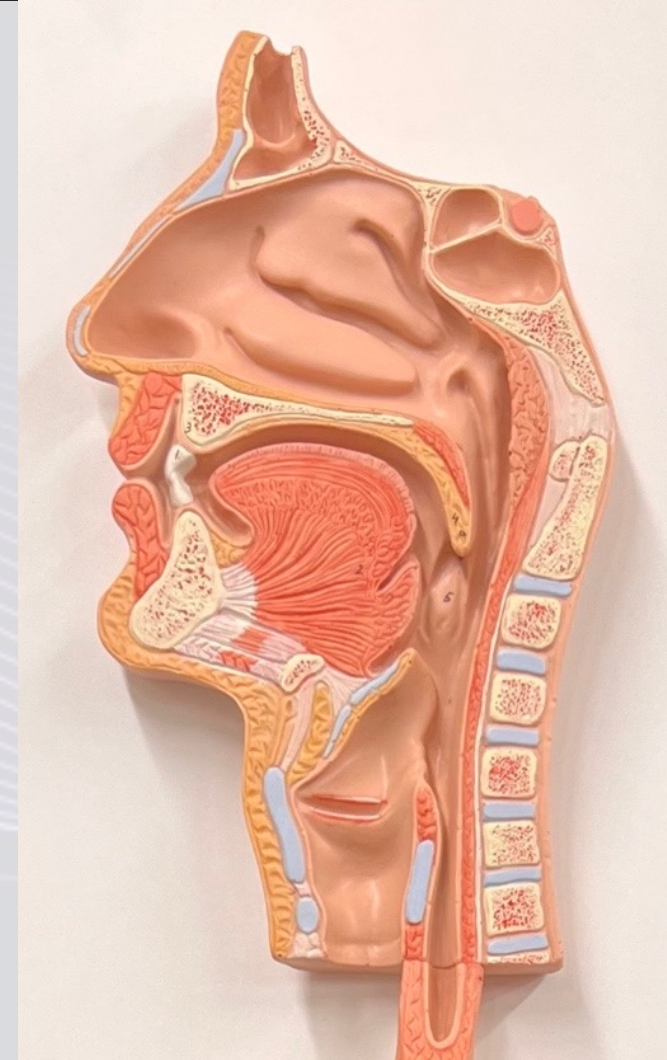
Dr. Lisa Brinn

lbrinn@fiu.edu



4) Pharynx

- Involved in digestion and respiration
 - Propels food
 - ❖ oral cavity → esophagus
 - Lubricates
 - ❖ Food
 - ❖ Passageways
 - Subdivisions:
 - ❖ Nasopharynx
 - Breathing
 - Speech
 - ❖ Oropharynx
 - ❖ Laryngopharynx
- } involved in breathing and digestion



Esophagus

- Upper esophageal sphincter
 - ❖ Allows bolus to move from laryngopharynx to esophagus
- Lower esophageal sphincter
 - ❖ Allows bolus to move from esophagus to stomach
 - ❖ Prevents chyme from entering the esophagus
- Functions:
 - ❖ Propels food to stomach
 - ❖ Lubricates food and passageways

